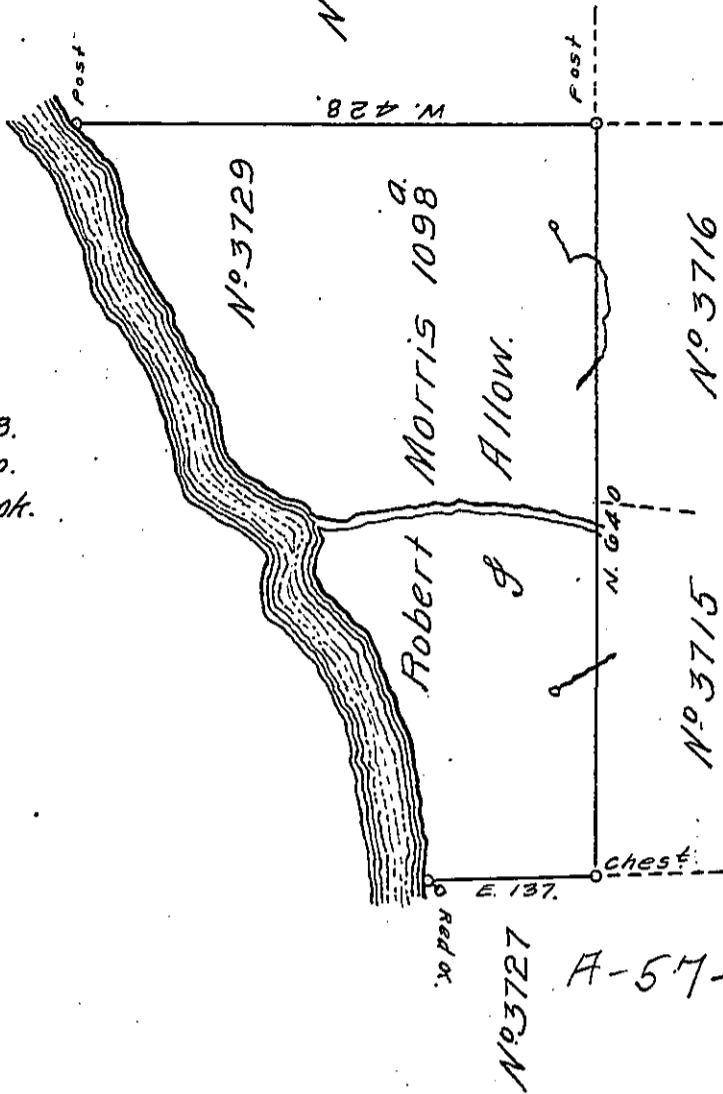


the Courses Distances

Down the River

Begining at Post thence.

- S. 40 E. 26. S. 43 E. 22.*
- S. 17. E. 74. S. 22 E. 32.*
- S. 81. E. 38. S. 53. E. 20.*
- S. 8. E. 12. S. 14 W. 44. S. 35 E. 14*
- S. 80 E. 30. S. 30 E. 74. S. 5. E. 68.*
- S. 15. E. 26. S. 31 E. 10. S. 10. E. 20.*
- S. 6. W. 18. S. 13. E. 32 to A Red. ok.*



By Virtue of A Warrant granted to Rob^t Morris the 5th Bay of March. 1793. & N° 3729. Survd the 5th Day of Aug^r 1793. the above described Tract of Land Situate in Northumb^d County on the East Side of Alegany River adjoining said River & Land of Said Morris. Containing one Thousand & Ninty Eight acres & Allow.

W^m P. Brady D. S.

*To Daniel Brodhead Esq^r }
Surveyor General }*

IN TESTIMONY that the above is a copy of the original remaining on file in the Department of Internal Affairs of Pennsylvania, made conformably to an Act of Assembly approved the 16th day of February, 1833, I have hereunto set my Hand and caused the Seal of said Department to be affixed at Harrisburg, this first day of June 1911.

Henry Howell
Secretary of Internal Affairs.